

This project is implemented through the CENTRAL EUROPE
Programme co-financed by the ERDF.

Newsletter

Newsletter for friends and partners of the project
Regions benefitting from returning migrants

Regions Benefitting from Returning Migrants Started



After 1989 Central Europe has come through important political, economic and social changes which conclusion was the entry of many CE countries to the European Union during the first decade of the 21st century. Joining European space accelerated economic growth of these countries and opened work migration flows through Europe, mainly Central Europe.

Economically motivated migration of people from the New Member States to high-income countries is currently dominating international migration flows in Europe thanks to the free right to work in any other EU Member State. This is intensifying a brain drain process of many regions ...

>> [Page 2](#)

Regional Task Forces Were Successfully Established in Germany and the Czech Republic



One of the most important tasks in the Re-Turn project is to form effective regional task forces within the involved 8 case study regions to improve framework conditions for the integration of returning migrants.

There were established 3 regional task forces in autumn 2011 during kick-off workshops. Two networks were set up in Germany (in Harz District and in Görlitz County) and one in the Czech Republic (in Ústí Region) ...

>> [Page 4](#)

Online Survey in Re-Turn Project Starts



Re-Turn supports emigrants in their wish to return. The proper was set up to match the needs of regional labour markets with the capacities of people willing to return. Now, the activities of this project have begun to interest directly the pilot areas in which the 12 partners, coming from 7 different countries in the framework of the Central Europe Programme, have started to create better conditions for attracting human capital, counter brain drain and support regional economic development ...

>> [Page 6](#)

Have you left your home region?
Participate in our survey at
<http://return.ifl-leipzig.de!>

Regions Benefitting from Returning Migrants Started



*Published by Thilo
Lang, Leibniz
Institute for
Regional
Geography/Lead
partner
and Zuzana
Bařtipánová,
Requalification and
Information
Centre/PP04*

After 1989 Central Europe has come through important political, economic and social changes which conclusion was the entry of many CE countries to the European Union during the first decade of the 21st century. Joining European space accelerated economic growth of these countries and opened working migration flows through Europe, mainly Central Europe.

Economically motivated migration of people from the New Member States to high-income countries is currently dominating international migration flows in Europe thanks to the free right to work in any other EU Member State. This is intensifying a brain drain process of many regions.

As an example it is significant to notice how between 2003 and 2007, about 2.2 million people moved from the New Member States towards the countries of the Old Member States of the EU. This phenomenon affected but not only Eastern Europeans but also other citizens. In fact, in 2006, e.g. 20.000 Germans moved towards Switzerland and 12.500 to Austria - most people due to better work options than in their home country.

On the other hand statistics show the willingness of people to come back to their countries, however this process is often associated with significant problems of reintegration and regions' neglecting of returning migrants to support regional economic development of their countries. It is estimated, that about 50 % of these out-migrants should return to their home countries within 50 years after emigration - a huge potential for regional development as these people gained new social, cultural and professional competences while being abroad.

Together we can to find and use hidden skills

Work-related migration flows have led to the realisation of the importance of this policy issue and was the starting point for development of the Re-Turn project as attracting and supporting returning migrants not only improves the regional knowledge base but also strengthens intercultural competence of innovative actors in an increasingly internationally networked world.

Therefore the project's main activities are linked to the development and

implementation of services needed to support migrants in their wish to return, promoting returning migrants as a source of innovative enterprise development, creating framework conditions for retaining human capital. The project sets to develop, test and implement joint strategies, new support policies, tools and services in participating regions to achieve this in a sustainable way.

The project Re-Turn aims at pushing the topic of return migration on the

political agenda, providing an account of the extent of return migration, competences and needs of returning migrants as well as concrete measures to promote remigration as a source to foster knowledge development. The project identifies advances and implements measures to capitalise on returning migrants and thus enhances human capital and entrepreneurial abilities in participating regions.

The specific objective of Re-Turn is to develop, share, test and implement new support policies, tools and services in participating regions to promote return migration to the benefit of regional knowledge development in a sustainable way. The actions implemented will result in attracting educated migrants back to their home region and thus compensating for losses of human capital in earlier periods. It will allow better matching of regional business needs and human capital offered through return migration. Particular competences of returning migrants - such as intercultural

competence, improved flexibility, and language competence - will then be capitalised to the benefit of regional economic development.

Main outputs of the Re-Turn project will help to achieve sustainable services and support structures to promote return migration like an online-tool presenting regional and national remigration trends, a handbook with transnational management tools to promote return migration, long-term implemented monitoring tools and support services for return migration.

Other strategic outputs are to strengthen regions' competitiveness in the long run which will also help further cohesion and change perception of decision-makers by addressing returning migrants as added value. This will be demonstrated with a joint memorandum of understanding and changed policy documents and working procedures in participating regions for better knowledge development with returning migrants.

When Re-Turn visibly started

With the kick-off conference »Regions benefitting from returning migrants« the cooperation of emigration regions in Central Europe in the new EU project Re-Turn was launched on 13th of July 2011. The event was hosted by the district of Harz and Leibniz Institute for Regional Geography as the Lead Partner of the project. The conference was part of a three-day event where the project partners also met for workshops and study visits to the former peripheral areas of German Democratic Republic (GDR). With approx. 50 representatives, experts, and actors coming from 8 European countries the conference was attended by far more participants than expected.

In the conference, strategic approaches for returning migration were reflected and best-practice examples for the utilisation of specific potentials presented. Mr Peter Gaffert (Mayor of Wernigerode) welcomed the project team and the conference participants in Wernigerode and reported about the demographic situation in the town. Beate Bröcker (State Secretary of the Ministry of Labour and Social Affairs Saxony-Anhalt) expressed her gratitude about the Re-Turn project and welcomed the conference delegates to Sachsen-Anhalt giving an insight in demographic and migration issues as well as policies in the region. Project manager Thilo Lang reported on the project history, its rationale and the objectives of Re-Turn; he also gave a first insight in the state of the art concerning return migration and introduced into the conference aims and programme. All partners gave small introductions to their partners' institutions and case study regions. All workpackages and main project activities and outputs were presented by workpackage leaders.

Partners also attended the study visits in region including visit to "Hochschule Harz", Harz AG, Chocotec, Quedlinburg Town registered in UNESCO world heritage site and mountain villages in the Harz.



Regional Task Forces Were Successfully Established in Germany and the Czech Republic

One of the most important tasks in the Re-Turn project is to form effective regional task forces within the involved 8 case study regions to improve framework conditions for the integration of returning migrants.

There were established 3 regional task forces in autumn 2011 during kick-off workshops. Two networks were set up in Germany (in Harz District and in Görlitz County) and one in the Czech Republic (in Ústí Region).

Harz District

Published by
Thomas Brammer,
Ministry of Labour
and Social Affairs
Saxony-Anhalt/PP06



About 20 attendants took part at the regional Re-Turn kick-off meeting of Regional Task Force in the German pilot region Harz in October 2011. The presentation of the Re-Turn project and a discussion about possible regional strategies to enhance re-migration in the Harz were the topics of the event. Representatives from different public authorities, companies and economic network as well as institutions of education listened to various presentations about migration trends in Saxony-Anhalt. The different aspects of migration and service concepts for supporting remigration were discussed and presented during a workshop.



Görlitz County

Published by Roger
Schmidtchen,
Association for
Social and Labour
Market
Integration/PP05



A regional network for regularly project meetings was set up in Görlitz County. The identification of stakeholders and intermediaries and the integration of them in the regional network framework is also an ongoing process. This is a crucial step in developing the regional task force. The regional Kick-Off meeting of Görlitz County in Weißwasser, which took place on October, the 18th, was successful. Essential partners (e.g. county authorities, decision makers of business, labour market, civil society) were involved and 25 participants have



followed our invitation. A lot of others couldn't join because of illness and other appointments but have send us their letters of apology and interest on further cooperation. We could welcome also Mr. Thomas Brammer

from the Ministry for Social Affairs Saxony-Anhalt as representative of our other German Re-Turn project partner in the case-study-region Harz. Mr. Robert Nadler from the lead partner

gave us an interesting background information of migration in Germany. For further information see also www.wohnen-und-inklusion.de. ●

Ústí Region

Kick-off workshop of regional task forces in case study Ústí Region took place in Libochovice Chateau on Thursday December, the 1st. The regional task force was established not only from representatives of regional associated institutions and other regional stakeholders but it was extended by national associated institution representatives and other

stakeholders in cooperation with the Czech partner No. 3 International Organisation for Migration in Prague (IOM). Finally 11 attendants from 8 stakeholders (for example Labour Office of the Czech Republic, Regional Branch in Ústí nad Labem; Regional Authority of the Ústí Region; Ministry for Labour and Social Affairs; Senate of the Czech Republic; etc.) took part in the kick-off workshop. During the workshop was presented the Re-Turn project by project partners RIC and IOM and there were discussed issues as role of stakeholders in the Re-Turn project, actual trends in migration from and to the Czech Republic, availability of statistical data and information about returning emigration, role of Czech emigrants in abroad and task to attract and integrate these emigrants back to Ústí region. Czech regional task force is looking forward to work on the project activities. ●

Published by Zuzana Bařtipánová, Requalification and Information Centre/PP04



Partners Information and News

International Conference “Social and economic impact of migration: Central and East-European perspectives” took place in Warsaw from 17th till 18th November, 2011. Conference objectives were aimed at a unique opportunity to examine the highly complex impacts of labour migration from a Central and East-European perspective. Eurofound together with Polish Ministry of Labour and Social Policy has extensive and

recent experience in migration research.

The first day was focused on the social consequences of migration on those left behind, i.e. the impact of migration on families and children, as well as on the elderly. Three workshops were organised on the following themes:

- Impact of migration on families, children and young adults
- Addressing labour shortages

International Organisation for Migration in Prague (IOM)/PP03



University of Szeged/PP08

- Management of migration processes at local and regional levels

The second day was dedicated to the scale and type of migration flows to countries of Central and Eastern Europe. The final concluding panel debate took stock of the debate and was discussed the main issues and challenges facing migration and integration from a European perspective.

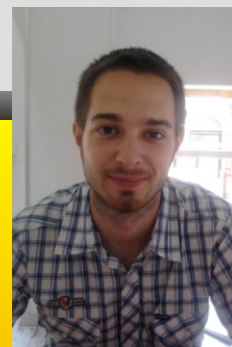
The conference was attended by Jan Schroth from IOM Prague, project manager of the PP03. Within the program was discussed also returning

inter-state as well as international migration. The return of population from abroad is high on agenda in Poland, the EU presidency country which organized the event. The Czech Republic was also represented by Senator Tomas Grulich. Under his gesture is also migration policy of the Czech Republic focusing Czech nationals abroad in particular. During discussion the Senator Mr. Grulich expressed interest in the Re-Turn project and became member of regional task force in the Czech Republic in beginning of December. ●

The University of Szeged (PP08) employed a newly graduated geographer on the Re-Turn project in July. Gábor Lados is a research assistant at the Department of Economic and Social Geography and carries out a three year long PhD research.

He graduated in Geography BSc and Geography MSc from this department between 2006 and 2011. In 2010 he received ERASMUS scholarship and spent four months at the University of Portsmouth (UK). ●

"I was very excited when I got this job. It is a big honour for me to work together with highly skilled researchers, my former teachers at the department. I am enthusiastic about geography and in my view return-migration is an interesting field for research. I expect from Re-Turn to widen my scientific knowledge and experience, and furthermore the possibility of cooperation with international researchers."



Online Survey in Re-Turn Project Starts

Published by Thilo
Lang, Leibniz
Institute for
Regional
Geography/LP

Re-Turn supports emigrants in their wish to return. The European project was set up to match the needs of regional labour markets with the capacities of people willing to return. Now, the activities have begun to interest directly the pilot areas in which the 12 partners have started to create better conditions for attracting human capital, counter brain drain and support regional economic development.

In this specific phase emigrants are invited to participate in an online survey in which they can provide information needed to support them in their wish to return. The survey is also open to people who have successfully returned and made their own experiences in this complex process. The project leaders want to gain information in this way to prepare pilot activities and new initiatives to directly support people in their re-migration.

We still do not really know enough about the special needs and competences of these people and therefore have set up the survey to improve national and regional policies.

*The survey is available from
22nd December 2011
at the website
<http://return.ifl-leipzig.de>.*

The project was set up to give answers to joint questions to all participating Central European regions:

- 1) What systemic policy should be formulated and implemented in order to effectively reintegrate returning migrants to the benefit of economic development?
- 2) How to make returnees invest after they are back and keep them active? How to identify the needs (in
- 3) respect of training, general support etc.) of returning migrants so that their knowledge, skills and financial capital are brought to the welfare of their home regions and localities?

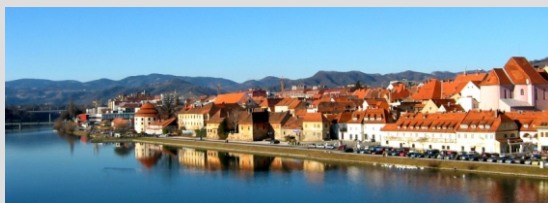
Other issues relevant for remigrants themselves are the following:

- How appropriate are newly acquired skills to the home environment?
- How productively can these new skills be deployed upon return?

All these issues have the objective of individuating a comprehensive assessment of the current situation, including the weaknesses and gaps in processes and policies, joint strategies and action development.

The survey is targeted in particular to migrants and remigrants and, for the first time ever, the Re-Turn project will comparatively learn more about the competences and needs of emigrants regarding their potential return to their home.

Migrants, re-migrants and other interested people are invited to fill the survey: the task takes about 20 - 30 minutes and can bring the chance to win a number of book vouchers valued 300 €.



Upcoming events inside and outside Re-Turn

Re-Turn: Project meeting in Maribor
Duration: 29 February - 2 March, 2012
Place: City Hotel, Maribor, Slovenia

Agenda:

1. Reporting and financial issues
2. WP3 - Understanding Needs and Potentials of Returning Migrants and Regional Conditions for Reintegration, Training Session for Survey Tools
3. WP2 - Communication Issues
4. WP4 - Tools and Methods to Promote Returning Migrants as a source to Foster Knowledge Development
5. Study Trips



For further information and registration contact Mrs. Darja Borsic, University of Maribor/PP12 (darja.borsic@uni-mb.si).

Central Europe Programme

CENTRAL EUROPE PROGRAMME is an European Union programme that encourages cooperation among the countries of Central Europe to improve innovation, accessibility and the environment and to enhance the competitiveness and attractiveness of their cities and regions.

The programme area covers about 1,050,000 square kilometres where live 148 million citizens. It includes regions from Austria, the Czech Republic, Germany, Hungary, Italy, Poland, the Slovak Republic and Slovenia.

The Re-Turn project is included in the first thematic area - Innovation and priority 1.3: Fostering Knowledge Development.

Duration

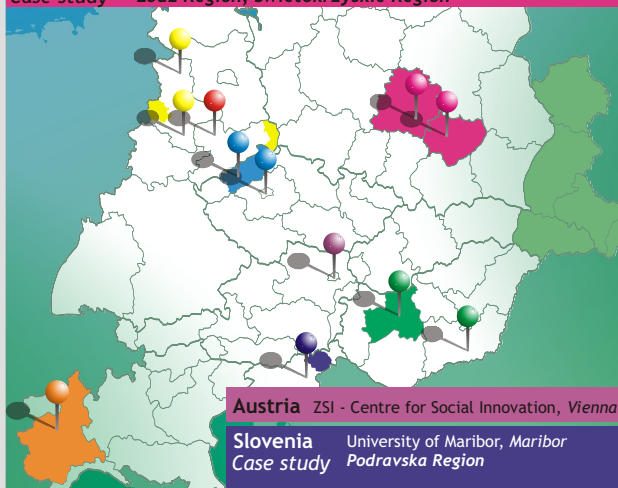
The Re-Turn project commenced in May 2011 and runs until April 2014 (36 months).

Lead Partner, Germany Leibniz Institute for Regional Geography, Leipzig

Germany Association for Social and Labour Market Integration, Merseburg
Ministry of Labour and Social Affairs Saxony-Anhalt, Magdeburg
Case study Görlitz Region, Harz Region

Czech Republic International Organization for Migration, Prague
Requalification and Information Centre, Most
Case study Ústí Region

Poland Lodz Region, Lodz
Świętokrzyskie Region, Kielce
Case study Lodz Region, Świętokrzyskie Region



Austria ZSI - Centre for Social Innovation, Vienna

Slovenia University of Maribor, Maribor
Case study Podravska Region

Hungary Mid-Pannon Regional Development Company, Székesfehérvár
Case study USZ - University of Szeged, Szeged
Central Transdanubia Region

Italy National Union of Mountain Municipalities, Communities
and Authorities - Piedmont Delegation, Torino
Case study Piemonte Region

How to subscribe or unsubscribe the Newsletter

At project website www.re-migrants.eu is in the homepage section "Project Newsletter" where you can include your email address to "SUBSCRIBE" the Newsletter or by click on link "UNSUBSCRIBE NOW" you can unsubscribe the Newsletter.

If you want to change an address, first unsubscribe under your present address and then re-subscribe under your new email address. OR, you can just subscribe under your new addy. After the newsletter "bounces" a few times at the old address, that address automatically gets deleted from the subscriber base.

! Observers or your support to the project are warmly welcome!

All recipients of this newsletter are kindly asked to support our collection of European initiatives in the field of returning migration by sharing with us their knowledge and expertise on relevant good practice examples and centres of knowledge!

Please get in contact with us personally at ladosg@geo.u-szeged.hu (Gabor Lados, Univerzity of Szeged/PP08)

i Project coordination

Leibniz-Institut für Länderkunde
(Leibniz Institute for Regional Geography)
Schongauerstrasse 9, 04329 Leipzig,
Germany

Project manager:
Dr. Thilo Lang
Tel: +49-341 60055-159
email: T_Lang@ifl-leipzig.de

Communication manager:
Mrs. Nuria Mignone
email: Uncem.eu@gmail.com

i Impression

Publisher:
Re-Turn partnership, represented by Lead Partner
Leibniz Institute for Regional Geography (Germany)
Editor:
Zuzana Bařtipánová - Requalification and Information
Centre (Czech Republic)
Design:
Tomáš Zahradník - Litvínov training company
(Czech Republic)

This documentation reflects the authors views. The programme bodies are not liable for any use that may be made of the information contained therein.